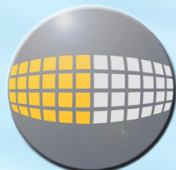
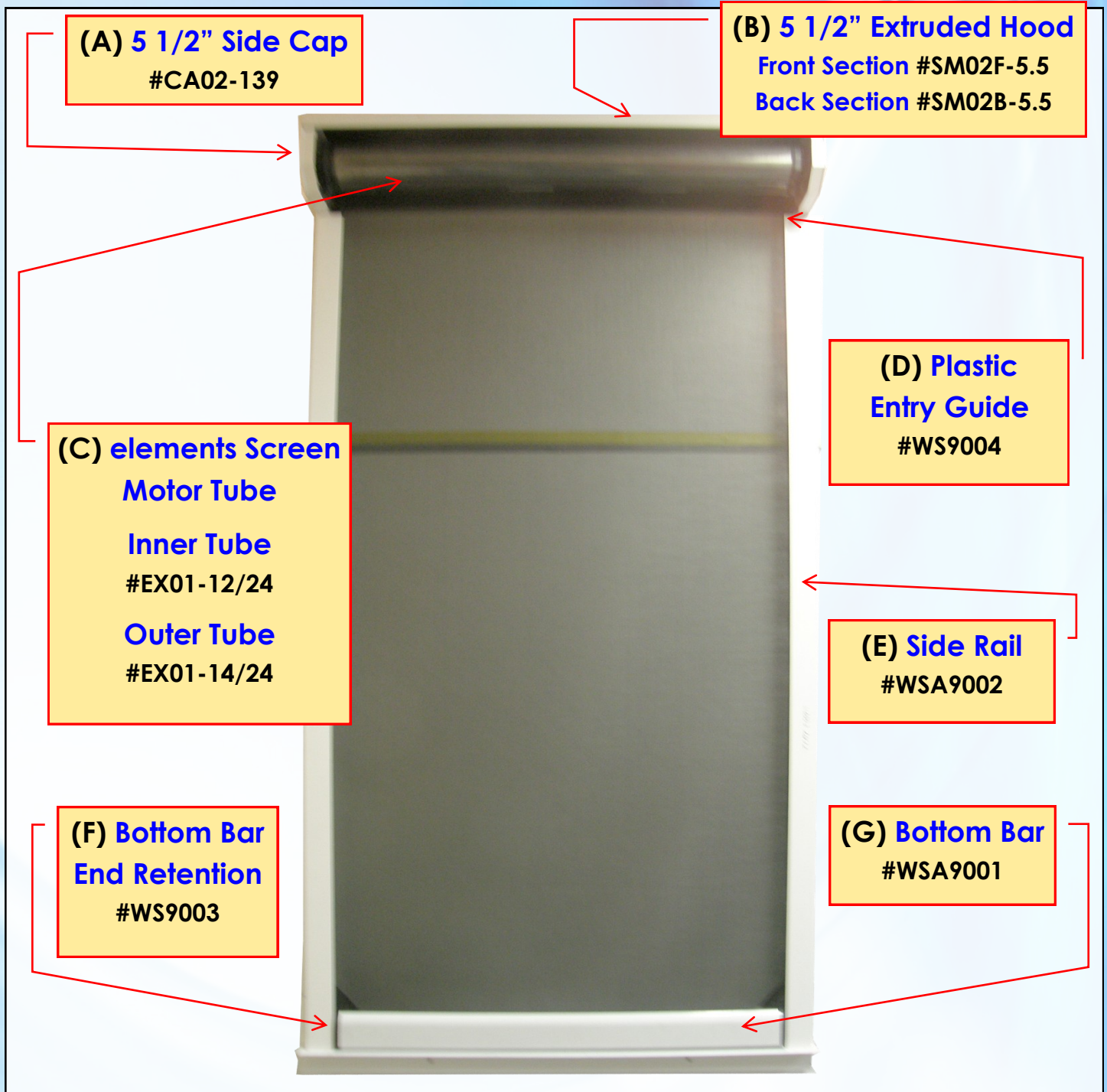




## Product Detail



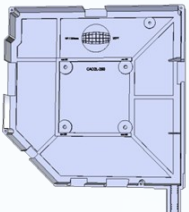
**MaestroShield<sup>®</sup>**

*Protection Like No Other*



### (A) Impact-Rated 5 1/2" Side Cap


- At 6mm thick, twice as thick as universal standard side cap
- Threaded galvanized steel inserts for mounting fastener plates
- Greater depth of threaded inserts for stronger connection
- Threaded inserts for mounting mini receiver
- Openings in casting for mounting manual crank without drilling
- Hood is recessed into side cap for flush appearance

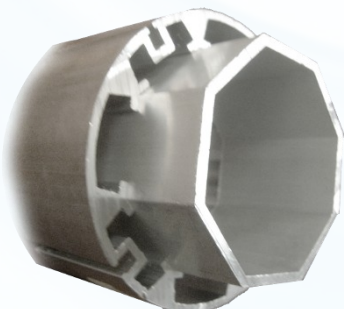
	Component Name	Item #	Specifications
	Impact-Rated 5 1/2 inch Side Cap	CA02-139	Weight - 0.75 lbs; 10-year powder coating warranty; thread inserts with galvanized steel so there is no need to drill holes; fits universal 45° hood



### (B) 5 1/2" 5-sided, Extruded Hoods

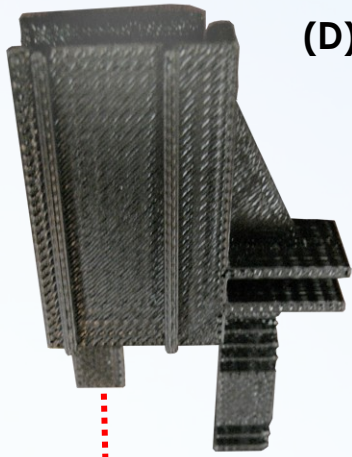
- At 1.5mm thick, 66% thicker walls than bent hoods; more resistant to denting during shipping and handling.
- Approx. 20% less expensive than bent hoods
- 10-year warranty on powder coat

	Component Name	Item #	Specifications
	5 1/2 inch 5-sided Extruded Hood	Front Section - SM02F-5.5 Back Section - SM02B-5.5	5 1/2" (140mm) hood; front section and back section sold separately; sold in 21 feet lengths

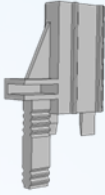


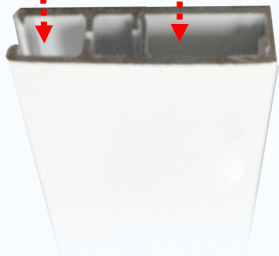
### (C) elements Screen Motor Tube

Component Name	Item #	Specifications
Inner Tube	EX01-12/24	60mm Octagonal; ID—57mm, OD—62mm; sold in 24 ft lengths
Outer Tube	EX01-14/24	88mm Round; ID—63mm, OD—88mm; sold in 24 ft lengths



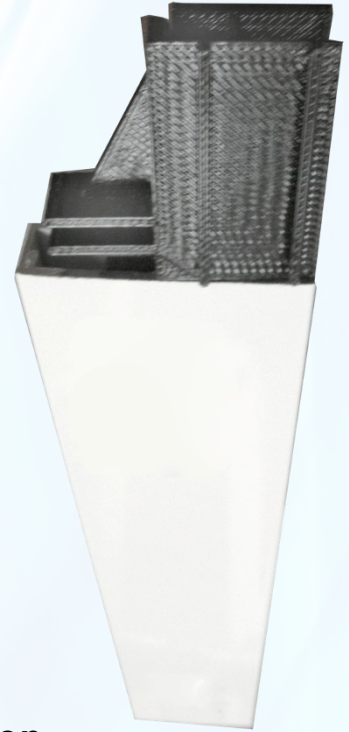
### (D) Plastic Entry Guide


	Component Name	Item #	Specifications
	Plastic Entry Guide	WS9004	Black plastic; seamlessly guides screen into side rails; sold in pairs



### (E) elements Screen Side Rail

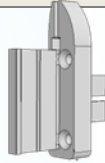
Two piece side rail snaps together with no visible screws for a clean elegant appearance



	Component Name	Item #	Specifications
	Elements Screen Side Rail	WSA9002	2.0" W X 0.6" D; 2-piece front and back snap together for clean, finished look with no visible screws; sold in 21' lengths




### (F) Bottom Bar End Retention

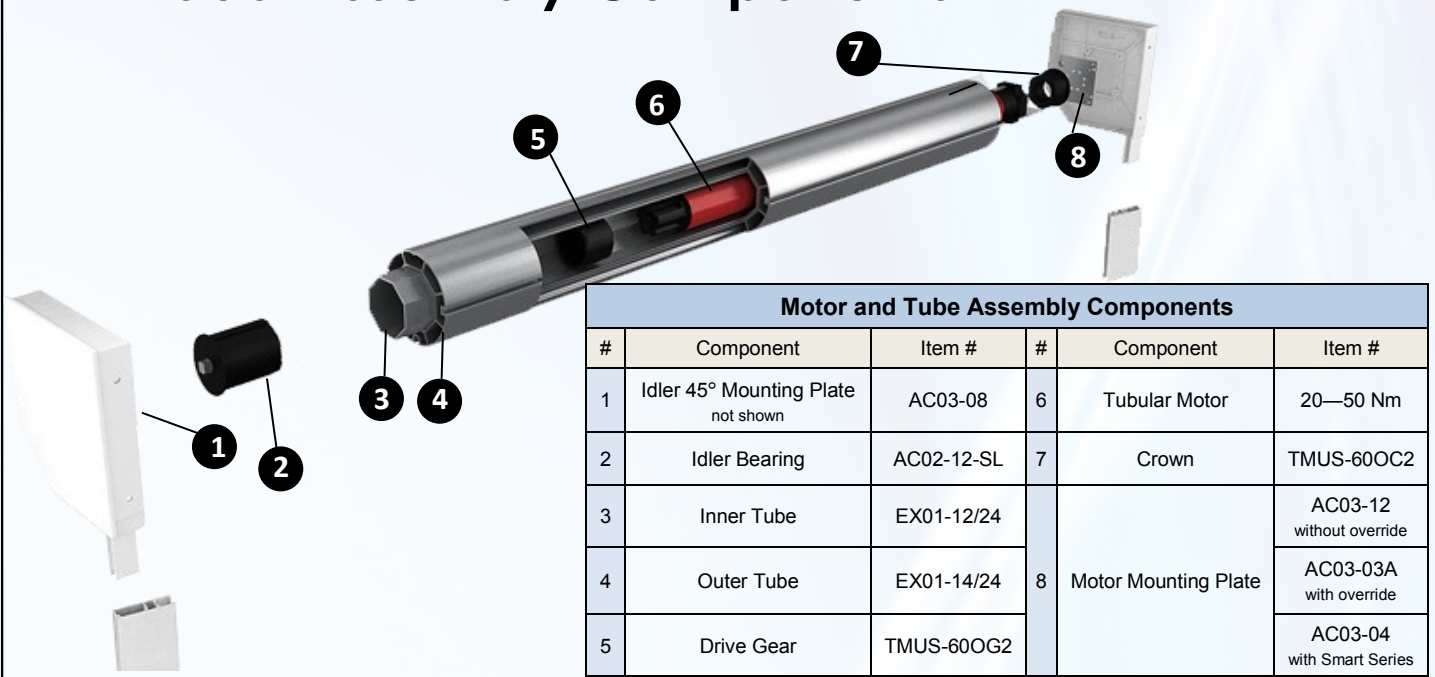
	Component Name	Item #	Specifications
	Bottom Bar End Retention	WS9003	Plastic; sold in pairs

### (G) elements Screen Bottom Bar

Heavy duty bottom bar retains a taut screen; weighted down with marine grade stainless steel to avoid corrosion

	Component Name	Item #	Specifications
	Elements Screen Bottom Bar	WSA9001	2-piece; weighted down with corrosion resistant steel bar; sold in 21' lengths

# Hood Assembly Components



Motor and Tube Assembly Components					
#	Component	Item #	#	Component	Item #
1	Idler 45° Mounting Plate not shown	AC03-08	6	Tubular Motor	20—50 Nm
2	Idler Bearing	AC02-12-SL	7	Crown	TMUS-60OC2
3	Inner Tube	EX01-12/24	8	Motor Mounting Plate	AC03-12 without override
4	Outer Tube	EX01-14/24			AC03-03A with override
5	Drive Gear	TMUS-60OG2			AC03-04 with Smart Series

elements  
screens

## Specifications

### FEATURES AND BENEFITS:

- elements Screen zipper system and seams are Radio Frequency Welded (heat welded) for extreme support.
- The screen Entry Guide on the Side Rail aligns and stabilizes screening to perfection.
- The heavy duty zipper system and Bottom Bar reduce friction providing precision lifting and lower capacity.
- There is no need to re-tension screens after installation. The heavy duty Bottom Bar retains a taut screen.
- The Bottom Bar is weighted down with marine grade stainless steel bars to avoid corrosion.
- All corners are reinforced for added strength.
- Motor Tubes are engineered to limit deflection.
- The screen is splined directly to the Motor Tube to eliminate sagging.
- No screws are visible in the side rails or bottom bar providing a clean, elegant appearance.
- elements Screen features MaestroShield Tubular Motors and Electronics, tested for their quality and strength and are supported by industry leading warranties.

**NOTE: Elements Screen is not rated for wind abatement. Some "sailing" will occur in windy conditions and it is recommended that the screen is only raised or lowered when the wind subsides.**

### SIZING:

- The maximum length and height is: 21 ft. x 18 ft. (6.4 m x 5.5 m)
- Applications with lengths up to 24 ft. (7.3 m) are available
- End Cap profile is 5 1/2" (14 cm)
- Side Rails are 2" (5.08 cm)

### MOUNTING:

- Flush Mount: Installed flush to the wall.
- Trapped Mount: Installed in a restricted space with no room above or on the sides
- Recessed Mount: Installed with tracks or hood located in a wall, ceiling or other architectural feature

### WARRANTIES:

- Powder Coating Warranty: AAMA 2603 (Interpon D1010 - 10-year nationwide; 1-year marine environment (within 1 mile of coastal shoreline))
- Most Tubular Motors are supported by a 5 Year replacement warranty. Smart Motors are supported by a 3 Year replacement warranty
- Electronics are supported by a 2 Year replacement warranty.

Rev 1.2



1450 Rail Head Blvd. • Naples, Florida • USA

+1 (239) 596-8883 phone • +1 (239) 596-8823 fax • +1 (239) 206-9115 24-hour Technical Support

[www.MaestroShield.com](http://www.MaestroShield.com)